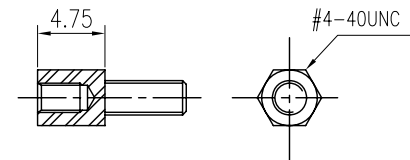
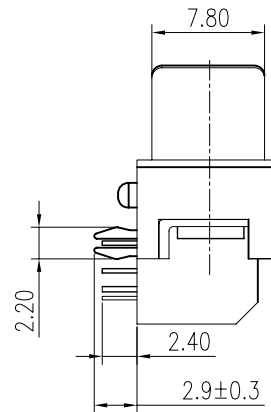
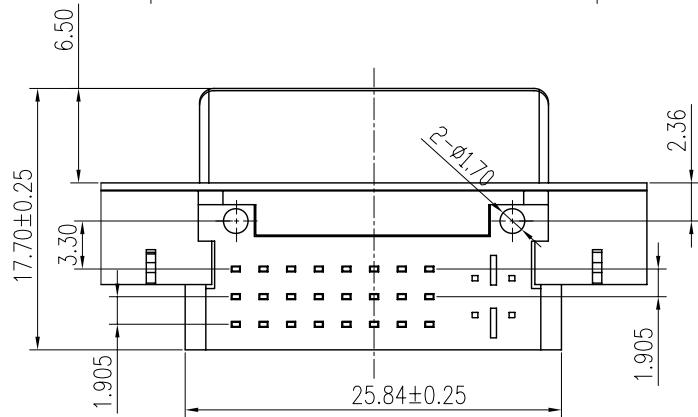
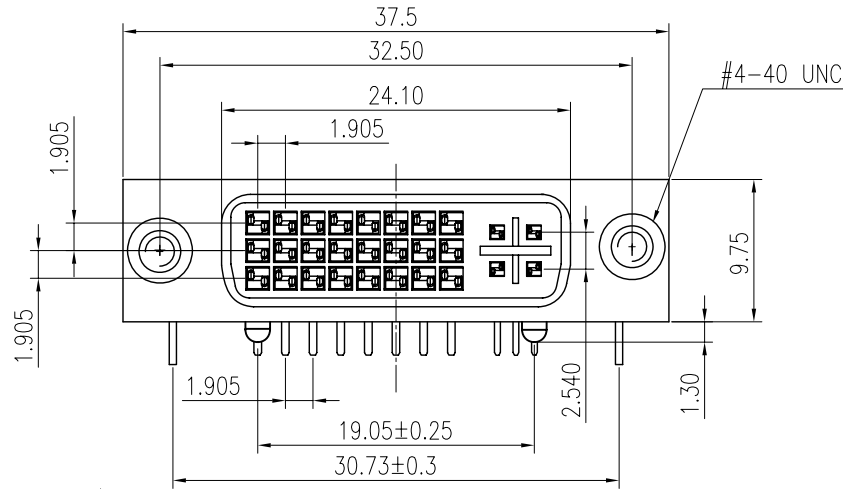
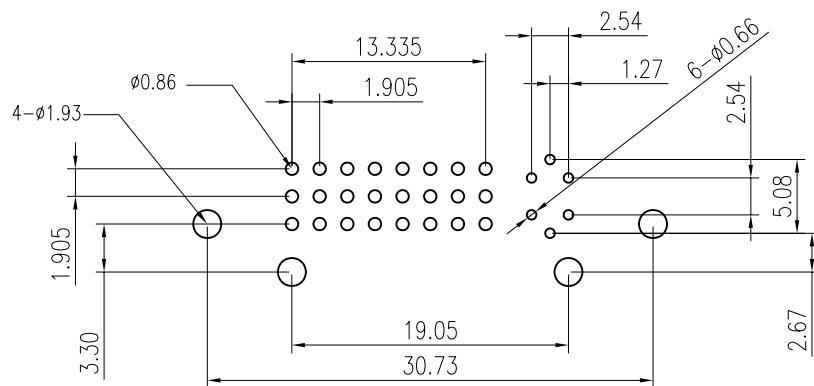


RoHS

Mark	ECN NO.	DESCRIPTION	DESIGN	Date:



附螺丝



P.C.B LAYOUT(TOP VIEW)

NOTE:

BODY: PBT+30%GF UL94V-0
 SPACER: PA66+30%GF UL94V-0
 CONTACTS: PHOSPHOR BRONZE ALLOYS
 CONTACT : PHOSPHOR BRONZE ALLOYS
 CONTACT : UNDER PLATED 50u"MIN NICKEL,
 OVER ALL 120u" MIN TIN IN SOLDERING AREA,
 SELECTIVE GOLD PLATED IN CONTACT AREA.
 SHIELD : SPCC T=0.5
 SHIELD : NICKEL PLATED WITH 120u"THICK.
 OVER 100u" THICKNESS Cu.

*MECHANICAL

MATING FORCE: 4.5 KG MAX. 25 MM/MINUTE
 UNMATING FORCE: 1.0-4.0 KG MIN.
 DURABILITY: 100 MATING CYCLES

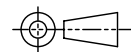
*ELECTRICAL SPECIFICATION

INSULATION RESISTANCE: 1000 MEGOHMS MIN
 DIELECTRIC WITHSTANDING VOLTAGE: 500V AC RMS±50V.60 HZ
 CURRENT RATING: 1.5 AMPERES MIN

*ENVIRONMENTAL

OPERATING TEMPERATURE: -20°C to 85°C

Tolerance	Model Name: DVI24+5 白胶 附锁			Drawing: Zengling
X.X ±0.30	Model No: WLDV-020A			Checked: Lijian
X.XX ±0.25	UNIT:	SCALE:	REVISION:	Approved: WEI JI YANG
X.XXX ±0.15	mm	FULL	A1	Date: 2011.08.23
Angle ±2.0°	DWG NO.			FILE: C



WLCO® 深圳市兴万联电子有限公司
 SHENZHEN XINGWANLIAN TECHNOLOGY CO, LTD